

The survey and all findings were not approved by the State of Georgia Department of Natural Resources until the Surveyor's Office approved the plat on July 13, 2004. The Surveyor's Office shall not be held responsible for any errors or omissions on this plat. The Surveyor's Office shall not be held responsible for any errors or omissions on this plat. The Surveyor's Office shall not be held responsible for any errors or omissions on this plat.

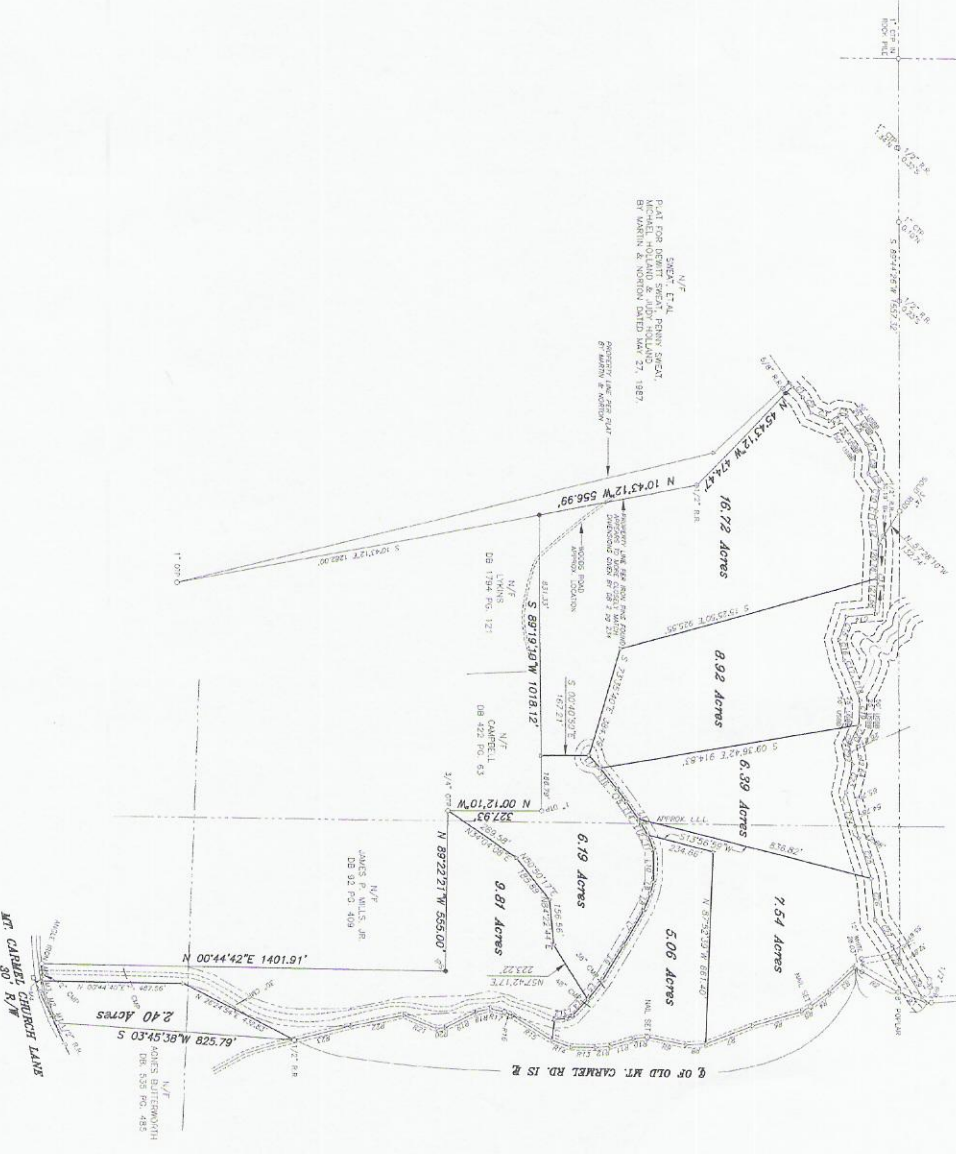
THE TOTAL AREA OF THIS MAP IS 100 ACRES. THIS PROPERTY IS NOT INTERESTED IN A PLAT FOR RECORDING PURPOSES. THE PLAT IS FOR RECORDING PURPOSES ONLY. THE TOTAL AREA OF THIS MAP IS 100 ACRES. THIS PROPERTY IS NOT INTERESTED IN A PLAT FOR RECORDING PURPOSES. THE PLAT IS FOR RECORDING PURPOSES ONLY.

CALL TABLE FOR CORNER OF SHAL CREEK

Course	Bearing	Distance
1	N 45° 17' 34" E	17.80
2	N 45° 17' 34" E	17.80
3	N 45° 17' 34" E	17.80
4	N 45° 17' 34" E	17.80
5	N 45° 17' 34" E	17.80
6	N 45° 17' 34" E	17.80
7	N 45° 17' 34" E	17.80
8	N 45° 17' 34" E	17.80
9	N 45° 17' 34" E	17.80
10	N 45° 17' 34" E	17.80
11	N 45° 17' 34" E	17.80
12	N 45° 17' 34" E	17.80
13	N 45° 17' 34" E	17.80
14	N 45° 17' 34" E	17.80
15	N 45° 17' 34" E	17.80
16	N 45° 17' 34" E	17.80
17	N 45° 17' 34" E	17.80
18	N 45° 17' 34" E	17.80
19	N 45° 17' 34" E	17.80
20	N 45° 17' 34" E	17.80
21	N 45° 17' 34" E	17.80
22	N 45° 17' 34" E	17.80
23	N 45° 17' 34" E	17.80
24	N 45° 17' 34" E	17.80
25	N 45° 17' 34" E	17.80
26	N 45° 17' 34" E	17.80
27	N 45° 17' 34" E	17.80
28	N 45° 17' 34" E	17.80
29	N 45° 17' 34" E	17.80
30	N 45° 17' 34" E	17.80
31	N 45° 17' 34" E	17.80
32	N 45° 17' 34" E	17.80
33	N 45° 17' 34" E	17.80
34	N 45° 17' 34" E	17.80
35	N 45° 17' 34" E	17.80
36	N 45° 17' 34" E	17.80
37	N 45° 17' 34" E	17.80
38	N 45° 17' 34" E	17.80
39	N 45° 17' 34" E	17.80
40	N 45° 17' 34" E	17.80

- LEGEND**
- SP 0 - 2" TO 24" RAIN GAUGE
 - SP 1 - 2" TO 24" RAIN GAUGE
 - SP 2 - 2" TO 24" RAIN GAUGE
 - SP 3 - 2" TO 24" RAIN GAUGE
 - SP 4 - 2" TO 24" RAIN GAUGE
 - SP 5 - 2" TO 24" RAIN GAUGE
 - SP 6 - 2" TO 24" RAIN GAUGE
 - SP 7 - 2" TO 24" RAIN GAUGE
 - SP 8 - 2" TO 24" RAIN GAUGE
 - SP 9 - 2" TO 24" RAIN GAUGE
 - SP 10 - 2" TO 24" RAIN GAUGE
 - SP 11 - 2" TO 24" RAIN GAUGE
 - SP 12 - 2" TO 24" RAIN GAUGE
 - SP 13 - 2" TO 24" RAIN GAUGE
 - SP 14 - 2" TO 24" RAIN GAUGE
 - SP 15 - 2" TO 24" RAIN GAUGE
 - SP 16 - 2" TO 24" RAIN GAUGE
 - SP 17 - 2" TO 24" RAIN GAUGE
 - SP 18 - 2" TO 24" RAIN GAUGE
 - SP 19 - 2" TO 24" RAIN GAUGE
 - SP 20 - 2" TO 24" RAIN GAUGE

REBECC LAND SURVEYING, P.C.
 1010 ...
 PHONE: (770) 278-8888 FAX: (770) 704-0488

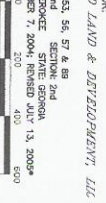


TOTAL AREA = 68.03 ACRES

NOTE: REDUCED FOR RECORDING PURPOSES ONLY.



SURVEY FOR:
EMERALD LAND & DEVELOPMENT, LLC
 LAND LOTS 53, 54, 57 & 58
 COUNTY: CHESTER
 STATE: GEORGIA
 DATE: OCTOBER 7, 2004; REVISED JULY 13, 2004*



CALL TABLE FOR OLD MT. CAMEL RD.

Course	Bearing	Distance
1	N 45° 17' 34" E	17.80
2	N 45° 17' 34" E	17.80
3	N 45° 17' 34" E	17.80
4	N 45° 17' 34" E	17.80
5	N 45° 17' 34" E	17.80
6	N 45° 17' 34" E	17.80
7	N 45° 17' 34" E	17.80
8	N 45° 17' 34" E	17.80
9	N 45° 17' 34" E	17.80
10	N 45° 17' 34" E	17.80
11	N 45° 17' 34" E	17.80
12	N 45° 17' 34" E	17.80
13	N 45° 17' 34" E	17.80
14	N 45° 17' 34" E	17.80
15	N 45° 17' 34" E	17.80
16	N 45° 17' 34" E	17.80
17	N 45° 17' 34" E	17.80
18	N 45° 17' 34" E	17.80
19	N 45° 17' 34" E	17.80
20	N 45° 17' 34" E	17.80

CALL TABLE FOR MT. CAMEL CHURCH LANE

Course	Bearing	Distance
1	N 45° 17' 34" E	17.80
2	N 45° 17' 34" E	17.80
3	N 45° 17' 34" E	17.80
4	N 45° 17' 34" E	17.80
5	N 45° 17' 34" E	17.80
6	N 45° 17' 34" E	17.80
7	N 45° 17' 34" E	17.80
8	N 45° 17' 34" E	17.80
9	N 45° 17' 34" E	17.80
10	N 45° 17' 34" E	17.80
11	N 45° 17' 34" E	17.80
12	N 45° 17' 34" E	17.80
13	N 45° 17' 34" E	17.80
14	N 45° 17' 34" E	17.80
15	N 45° 17' 34" E	17.80
16	N 45° 17' 34" E	17.80
17	N 45° 17' 34" E	17.80
18	N 45° 17' 34" E	17.80
19	N 45° 17' 34" E	17.80
20	N 45° 17' 34" E	17.80

6) PLAT FOR WALDESSA MOUNTAIN LLC
 CONVEYANCE TO JENNIFER LEE
 DATE: OCTOBER 7, 2004; REVISED JULY 13, 2004*